

University of Tsukuba Hospital

Hospital Guide 2021



To continue our mission as an advanced treatment hospital: Living together in the COVID era

Akira Hara

Director, University of Tsukuba Hospital



In the midst of the ongoing COVID-19 pandemic, the University of Tsukuba Hospital continues to protect human lives on the frontline as the only advanced treatment hospital in Ibaraki Prefecture, an advanced emergency and critical care center, and as a prioritized medical institution accepting COVID-infected patients. Within the hospital that is the bedrock of these activities, diverse measures are being taken to prevent the spread of infection. These measures include, for example, the preparation of a manual on the medical care system, implementation of PCR testing on all inpatients (including same-day discharges), mandatory temperature checks for visitors, and the encouragement of telephone follow-up examinations, all of which we have implemented since last year. As a result, there have been no notable COVID-19 infection cases within the hospital and we have been able to sustain our regular medical activities. We are sincerely grateful to everyone in our hospital community.

The University of Tsukuba Hospital participates in both Ibaraki Prefecture's Council for COVID-19 Responses and the Hospital Coordination Office for COVID-19 Infection and cooperates enthusiastically in combatting COVID-19 not only within the hospital itself but all over Ibaraki Prefecture. We dispatch infectious disease professionals affiliated with our hospital to other medical institutions in the prefecture, providing various types of professional support, and to mass vaccination sites experiencing doctor shortages in order to assist our community in returning to normal life amidst this chaos. Therefore, to protect local medical resources, we would like to request cooperation with infection countermeasures not only when visiting the hospital but on a daily basis.

I would now like to briefly tell you about the major activities and the recent role that the University of Tsukuba has been playing in the COVID-19 pandemic. In October 2020, the University was designated by the Ministry of Education, Culture, Sports, Science and Technology (MEXT) as a Designated National University Corporation and, from the 2022 academic year, our 4th Mid-term Goal and Plan Period will commence. University-wide preparations are currently being pursued and we believe that we can play a tremendously important role from the perspective of our research institutions. In response to global research trends, the hospital will pursue the social implementation of cutting-edge medical research results, specifically the practical use of next-generation particle therapy systems and the creation of an R&D foundation for innovative research in the AI and big data fields with an eye on the digitally transformative (DX) era.

The ongoing COVID-19 pandemic remains a situation in which we cannot let our guard down for even a moment but, with the cooperation of the government, neighboring medical institutions, and the prefectural community, we will continue to devote all our energy to emerge victorious from the COVID era and contribute to the development of medicine and medical care in Japan.

Principle

We are committed to providing high-quality medical care and cultivating medical professionals who contribute to developing the medical field.

Policy



Characteristics

The University of Tsukuba Hospital is the major teaching hospital of the University of Tsukuba School of Medicine and leads the country in providing innovative training programs for residencies and fellowships in various fields. As a teaching hospital, we provide multidisciplinary education to students in diverse specialties and also encourage compassionate and personalized care for patients provided by integrated medical teams consisting of highly qualified physicians, nurses, and other medical professionals.

The Hospital is also designated as a “Special Functioning Hospital” that is committed to providing state-of-the-art medical care and conducting educational and research activities that promote patient care. The referral system between the University Hospital and other community hospitals and clinics is utilized to best meet the needs of each patient.



CONTENTS

- Principle / Policy / Characteristics 2
- Contents 3
- History 4
- Topics 6
- Organizational Chart 8
- Clinical Departments 10
- Number of Staff 10
- Chiefs/Directors of Clinical Services and Departments 11
- Designated Special Functions of the Hospital 14
- Clinical Activities 16
- Building Layout 20
- Access Map 21

The University of Tsukuba Hospital has obtained and retained ISO 9001 accreditation.

ISO 9001 is a series of standards for organizational management procedures that serve to better meet customer, employee, and stakeholder expectations. Our Hospital has maintained ISO 9001 accreditation since 2004. The accreditation badge on the right indicates that the Hospital's quality management procedures have been certified by BSI Group Japan (ISO-certifying organization) to meet ISO 9001: 2015 requirements. By retaining ISO 9001 accreditation, we will continue to improve our management to meet and exceed the expectations of our hospital community, staff, and stakeholders.



FS 80637 / ISO9001

The University of Tsukuba Hospital has also obtained and renewed hospital accreditations.

Hospital accreditation is a process for evaluating the provision of basic activities for the purpose of offering medical services as an organization. An accrediting body surveys a hospital's activities from a neutral and fair standpoint and evaluates them against a certain set of criteria. According to this process, the University of Tsukuba Hospital has been evaluated as an "accredited hospital" that meets these standards. We have the following credentials from the Japan Council for Quality Health Care (JCQHC).

Hospital evaluation: 3rd G Ver 1.1 (as of November 10, 2017)

- Primary function: General hospital 2 (more than 500 beds)
- Secondary function: Mental hospital



History

1975-2021

- 1975 April 1 ■ University Hospital Startup Preparation Office established.
- 1976 January 31 ■ Hospital Building (Building B) completed.
- March 27 ■ Outpatient Clinic (Building A) and Diagnostic and treatment facilities (Building C) completed.
- May 10 ■ The following departments and offices were established:
Hospital Department (current Department of University Hospital Management) in the administrative offices.
Fifteen medical departments in the Hospital, Clinical Laboratory Department, Operation Department,
Radiology Department, Materials Department (current Supply Processing and Distribution Center),
Pharmacy Department and Nursing Department.
- October 1 ■ **The University Hospital opened.**
- 1977 April 18 ■ 3rd Department of Internal Medicine, Neurology, and Neurosurgery established.
Department of Emergency (current Department of Emergency and Critical Care Medicine) and Medical Records established.
- June 15 ■ Special Treatment Building (Building D) completed.
- 1981 March 20 ■ Wards (Building E) completed.
- April 1 ■ Department of Childbirth (current General Perinatal Treatment Center) established.
- 1982 April 1 ■ Department of Physical Therapy established.
- 1988 March 30 ■ MR Building (Building F) completed.
- May 25 ■ Graduate Clinical Training Department (current Medical Education and Training Center) established.
- 1990 June 8 ■ Department of Critical Care Medicine (current Department of Emergency and Critical Care Medicine) established.
- 1992 April 10 ■ Department of Transfusion Medicine established.
- December 15 ■ Extension to the outpatient building (Building A) completed.
- 1994 March 22 ■ Extensions to MR building (Building F) completed.
- May 20 ■ Department of Endoscopy and Photodynamic Medicine established.
- 1995 April 1 ■ Department of Medical Records reorganized into the Department of Medical Informatics (current Department of Medical Informatics, Strategic Planning, and Management).
- 1997 April 1 ■ Department of Pathology established.
- 1999 February 15 ■ Received accreditation from the Japan Council for Quality Health Care.
- 2000 April 1 ■ Department of Physical Therapy reorganized into the Rehabilitation Department.
- 2001 April 1 ■ Department of Blood Purification established.
- September 1 ■ A new facility of Proton Medical Research Center completed within the Hospital.
- 2002 April 1 ■ Quality Assurance and Risk Management Department established.
- 2003 March 31 ■ Extension of MR building (Building F) completed.
- April 1 ■ Medical Welfare Support Center (current Medical Liaison and Patient Support Services Center) established.
- 2004 February 15 ■ Accreditation renewed for the Japan Council for Quality Health Care.
- March 9 ■ ISO9001:2000 accreditation obtained.
- April 1 ■ **Re-launched as the University of Tsukuba Hospital affiliated with National University Corporation.**
Central and Special Medical Treatment facilities integrated as Clinical Facilities.
Clinical Nutrition Department newly established.
- June 21 ■ Strategic Management Office established.
- 2005 June 29 ■ Ibaraki Prefecture Incurable Disease Consultation and Support Center established.
- July 1 ■ Palliative Care Center established.
- 2006 March 2 ■ Project team for the university hospital redevelopment established at the University of Tsukuba.
- September 25 ■ Accreditation renewed for the Japan Council for Quality Health Care.
- 2007 February 1 ■ Tsukuba Human-Tissue Diagnostic Center established.
- March 9 ■ ISO9001 accreditation renewed.
- March 26 ■ AIDS treatment core base hospital
- July 1 ■ Clinical Tumor Center (current Comprehensive Cancer Center) established.
- 2008 February 8 ■ Designated as a Regional Cancer Care Hospital.
- April 1 ■ Outpatient Chemotherapy Room established.
- July 1 ■ Medical Equipment Management Center established.
- September 24 ■ Received accreditation from the Japan Council for Evaluation of Postgraduate Clinical Training.
- 2009 April 1 ■ Mito Clinical Education and Training Center established.
- 2010 February 12 ■ ISO9001:2008 accreditation renewed.
- April 1 ■ ISO & Medical Services Support Department established.
Kasama Education and Training Station established.
- October 1 ■ Ibaraki Clinical Education and Training Center established.
- December 27 ■ Radiotherapy Quality Management Office established.
- 2011 April 1 ■ Hitachinaka Medical Education and Research Center, Clinical Trial and Research Center (CTRC) established.

2012	April 1	■ Infection Control Department, Hitachi Medical Education and Research Center, Tsuchiura Clinical Education and Training Station (current Tsuchiura Clinical Education and Training Center), Kitaibaraki Medical Education Station, and Comprehensive Special Zones for International Competitiveness Development Promotion Office established.
	June 18	■ Office for the Promotion of International Medical Affairs (OPIMA) (current International Medical Center) established.
	July 1	■ Ibaraki Pediatric Education and Research Station established. English language name of the hospital changed to 'University of Tsukuba Hospital'.
	September 10	■ Clinical Trial and Research Network Ibaraki established.
	September 30	■ New building (KEYAKI Building) completed.
	December 1	■ Office for Volunteer Services established.
	December 26	■ Use of the new building (KEYAKI Building) starts.
2013	January 1	■ Children's Medical Center and Pediatric Intensive Care Unit established. Designated by Ibaraki Prefecture as an emergency medical center for children.
	February 1	■ Hospital Bed Management Center established.
	February 8	■ ISO9001:2008 accreditation renewed.
	April 1	■ Dementia-Related Diseases Medical Center established. Designated by Ibaraki Prefecture as a hub-type dementia medical care center. The Division for Strategic Research in Advanced Particle Therapy, Laboratory for Neutron Medical Research established at the Proton Medical Research Center.
	September 1	■ Tsukuba-city Birth Center established.
	October 1	■ Clinical Psychology Department established.
	November 1	■ Tsukuba Human Tissue Biobank Center established. Designated by Ibaraki Prefecture as a hub-type dementia medical care center. Accreditation renewed by the Japan Council for Quality Health Care.
2014	January 1	■ Center for Innovative Medicine and Engineering established.
	July 16	■ Toride Community Medical Education Station established.
	October 1	■ Proton Beam Therapy Center established.
2015	January 1	■ Rehabilitation Department established.
	April 1	■ Medical Oncology Department and Comprehensive Disaster and Emergency Management Office established.
	June 1	■ Tsukuba Clinical Research & Development Organization (T-CReDO) established.
	July 1	■ Kamisu Clinical Education and Training Center established.
	August 1	■ Department of Clinical Genetics established.
	September 1	■ 'Kiri no ha (Paulownia Leaf)' Library reading room for patients established.
	October 1	■ Tsukuba Sports Medicine & Health Science Center established.
2016	March 2	■ ISO9001:2008 accreditation renewed.
	April 1	■ Ibaraki Prefectural Center of Disaster Psychiatry established. Office for the Promotion of International Medical Affairs (OPIMA) renamed the International Medical Center.
	October 1	■ Tsukuba Preventive Medicine Research Center established.
2017	March 1	■ Designated as a nuclear emergency core hospital by Ibaraki Prefecture.
	April 1	■ Stroke Treatment Section established. Division of Quality and Safety Management established.
2018	April 1	■ General Internal Medicine Section established. Advanced Emergency Center established. Medical Center for Intractable Diseases established. Designated as an intractable disease treatment core hospital by Ibaraki Prefecture. Designated as an allergic disease medical hospital by Ibaraki Prefecture. Western Ibaraki Prefectural Joint Center for Clinical Education and Training established.
2019	March 2	■ Transition to ISO9001:2015.
	April 1	■ Naming changed from "Department(Group)" to "Department". Nutrition Support Center established. Antimicrobial Stewardship Center established. Koga-Bando Clinical Education and Training Center established. Division of Planning and Hospital Management abolished and Division of Hospital Redevelopment Promotion and Division of Accounting established.
	July 1	■ Epilepsy Center established.
	September 19	■ Designated as the core hospital for cancer genome medical care.
2020	April 1	■ Advanced Emergency and Critical Care Center established. Kiri no ha Mall (Amenity Mall) opened. Division of Patient Services renamed Division of Medical Support. Physician's Affairs Support Office established.
	October	■ Repair work to Building B launched.
2021	April 1	■ Office for the Promotion of Regenerative Medicine established. Joint use of the KEYAKI Annex Building launched.

TOPICS

To maintain the functions of an advanced treatment hospital The University of Tsukuba Hospital's COVID-19 countermeasures

As the sole advanced treatment hospital in Ibaraki Prefecture, the University of Tsukuba Hospital mainly accepts seriously ill patients who other medical institutions would find difficult to deal with as well as patients requiring specialized medical care.

While maintaining the normal functions of an advanced treatment hospital, it is vital for us to prevent the spread of infection within the hospital in order to cope with COVID-19 patients. Focusing on the Hospital's Office for COVID-19 Infection Countermeasures, which was established on March 25, 2020, we created our own system before national-level guidelines were even available. Responding to day-to-day changes in the social situation and other issues, we are conducting initiatives to keep the risk of infection to an absolute minimum using a four-point countermeasure system (see figure).

We hope to continue to protect medical care in Ibaraki Prefecture as an advanced treatment hospital while closely cooperating in shared roles with medical institutions at the prefectural and national levels.

Office for COVID-19 Infection Countermeasures			
External measures	Responses to faculty & staff	Measures to prevent in-hospital infection	Acceptance of patients
<ul style="list-style-type: none"> - Participation in Ibaraki Prefecture's Council for COVID-19 Responses - Participation in Ibaraki Prefecture's Hospital Coordination Office for the COVID-19 Infection - Dispatch of medical professionals within and outside of the prefecture - Dispatch of medical professionals to group vaccination facilities 	<ul style="list-style-type: none"> - Formulation of separate phases within the hospital and guidelines on conduct - Securing of dedicated accommodation for medical staff treating infected patients - Mental health countermeasures (establishment of dedicated consultation point and implementation of stress checks) - Improved conditions for medical professionals treating infected patients (payment of allowances by the hospital) 	<ul style="list-style-type: none"> - Preparation of medical care system manual - Implementation of PCR testing on all hospitalized patients and those undergoing day surgery - Temperature checks of all hospital visitors - Launch and use of telephone follow-up examinations - Vaccination of all staff 	<ul style="list-style-type: none"> - Designation as a prioritized medical institution by Ibaraki Prefecture. Securing of dedicated wards for seriously ill and moderately ill patients and acceptance of other patients - Securing dedicated wards for patients suspected of being infected and creation of a countermeasures team

A national first initiative at a Japanese university hospital The start of alcohol reduction outpatient care to improve drinking habits

On April 1, 2021, the University of Tsukuba Hospital launched its alcohol reduction outpatient care program in consideration of the risks of alcohol to personal health, to think cooperatively about appropriate targets for the amount of alcohol consumed, and link these with changes in behavior.

The outpatient care program consists of recording the responses of patients to a questionnaire on their drinking habits, which is then followed by an examination and consideration of appropriate amounts of alcohol for patients based on interviews and blood samples. Support is also provided for changes in behavior, including the administration of medicine. In addition, for cases where severe alcohol dependence is suspected, the care acts as a conduit to other specialist institutions.

In Japan there is hardly any outpatient care aimed at reducing the amount of alcohol consumed or quitting drinking entirely among people suffering from the physical or mental effects of alcoholism. The alcohol reduction outpatient care service will act as a consultation point for those with anxiety caused by health damage or overconsumption while providing support for the realization of better drinking habits and healthy lifestyles.



Renovation for further advanced medical care provision and the discovery of new healthcare technologies

Launch of seismic isolation work in Building B

In order to address the aging of buildings and make the University of Tsukuba Hospital a medical institution better fit to recent medical systems and education, a redevelopment plan was enacted in 2005. In 2012, the new KEYAKI Building came into operation as the result of a private finance initiative (PFI) using all the knowhow of the private sector. The KEYAKI Building is fully equipped with features requisite for sophisticated acute-phase medical treatment, such as an ICU, and a severe illness ward, surgical wards, and emergency and sophisticated operations departments. It also boasts a seismic isolation structure and can therefore serve as a hospital that is strong in the face of natural disasters.

Building B will be brought up to speed and equipped with earthquake resistance via the seismic isolation retrofiting* technique. At the same time, improved wards and patient spaces to improve quality of stay will be created and advancements made to strengthen the facility functions that support medical care. In addition, through the expansion of the Tsukuba Clinical Research & Development Organization (T-CReDO), which was established as a center for the medical training unit and R&D into medicines and medical equipment, we will strengthen its functions as an incubator for the next generation of medical staff and technology.

As the renewal work on Building B will be conducted under a gradual transition of functions up until December 2023, we would like to apologize in advance and request understanding regarding both the noise generated by the work and the considerable nuisance caused to patients and others due to the disruption in movement flow within the facility.

*Seismic isolation retrofiting is a method to reduce shaking during earthquakes by inserting a seismic isolation device in between the building and its foundations without the need for any earthquake-resistant material in the upper floors.



Image of general units (one bed/four beds)



Image of the elevator hall

*The actual wards may differ from these images.

Establishment of “sleep checkups” at the Tsukuba Preventive Medicine Research Center (T-PMRC)

In April 2017, to realize a society of health and longevity through preventive medicine, the University of Tsukuba Hospital opened the Tsukuba Preventive Medicine Research Center (T-PMRC), which had been conducting health checkups, and from April 1st this year the hospital started a “sleep checkup” service to scientifically examine and evaluate sleep.

One in four Japanese experience sleep problems and there is a growing awareness that sleep is a modern-day social issue. In some cases, it is difficult for people to realize they are suffering from sleep problems and, if left untreated, these can lead to an increased risk of lifestyle-related diseases and dementia in addition to serious accidents.

These checkups consist of an examination made at the patient’s home over a five-day period and enable comprehensive research into all sorts of sleeping disorders (spanning from frequency of sleeplessness to sleep apnea syndrome) as well as serious issues such as nocturia or mental illness.

The T-PMRC will continue to provide health checkups by leveraging comprehensive capabilities unique to a university hospital and contribute to society through the pursuit of preventive medicine research.



Sleeplessness?

Recommended for those with these symptoms

Possible lack of sleep

Snoring
Unable to sleep well



Sleepy during the day

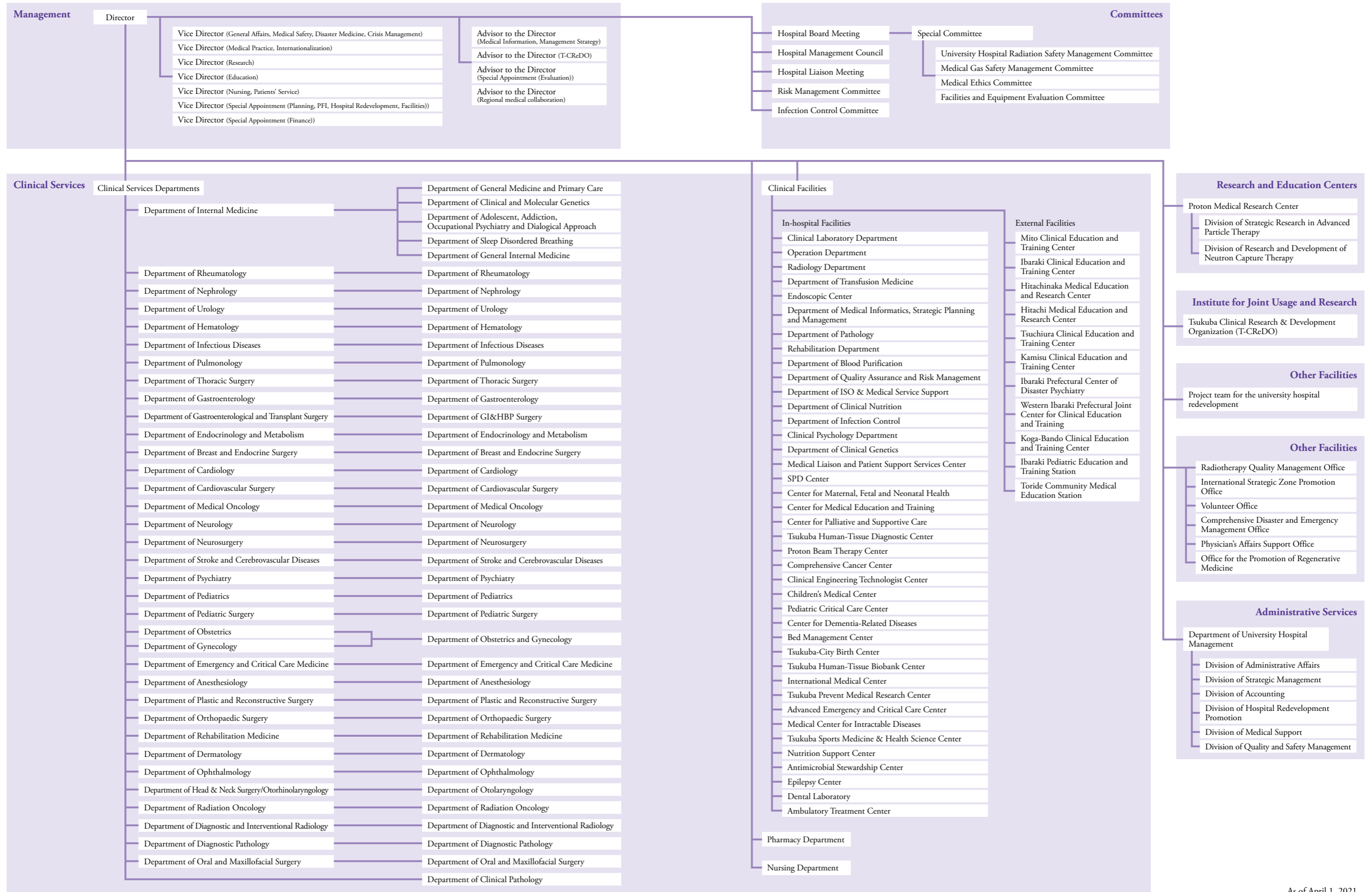
Sleepy when driving

Worried about breathing during sleep

Wake up often in the night

Want to know about your own sleep

Organizational Chart



As of April 1, 2021

Clinical Departments

Clinical Services Departments	Clinical Departments
Department of Internal Medicine	Department of General Medicine and Primary Care Department of Clinical and Molecular Genetics Department of Adolescent, Addiction, Occupational Psychiatry and Dialogical Approach Department of Sleep Disordered Breathing Department of General Internal Medicine
Department of Rheumatology	Department of Rheumatology
Department of Nephrology	Department of Nephrology
Department of Urology	Department of Urology
Department of Hematology	Department of Hematology
Department of Infectious Diseases	Department of Infectious Diseases
Department of Pulmonology	Department of Pulmonology
Department of Thoracic Surgery	Department of Thoracic Surgery
Department of Gastroenterology	Department of Gastroenterology
Department of Gastroenterological and Transplant Surgery	Department of GI&HBP Surgery
Department of Endocrinology and Metabolism	Department of Endocrinology and Metabolism
Department of Breast and Endocrine Surgery	Department of Breast and Endocrine Surgery
Department of Cardiology	Department of Cardiology
Department of Cardiovascular Surgery	Department of Cardiovascular Surgery
Department of Medical Oncology	Department of Medical Oncology
Department of Neurology	Department of Neurology
Department of Neurosurgery	Department of Neurosurgery
Department of Stroke and Cerebrovascular Diseases	Department of Stroke and Cerebrovascular Diseases
Department of Psychiatry	Department of Psychiatry
Department of Pediatrics	Department of Pediatrics
Department of Pediatric Surgery	Department of Pediatric Surgery
Department of Obstetrics	Department of Obstetrics and Gynecology
Department of Gynecology	
Department of Emergency and Critical Care Medicine	Department of Emergency and Critical Care Medicine
Department of Anesthesiology	Department of Anesthesiology
Department of Plastic and Reconstructive Surgery	Department of Plastic and Reconstructive Surgery
Department of Orthopaedic Surgery	Department of Orthopaedic Surgery
Department of Rehabilitation Medicine	Department of Rehabilitation Medicine
Department of Dermatology	Department of Dermatology
Department of Ophthalmology	Department of Ophthalmology
Department of Head & Neck Surgery/Otorhinolaryngology	Department of Otolaryngology
Department of Radiation Oncology	Department of Radiation Oncology
Department of Diagnostic and Interventional Radiology	Department of Diagnostic and Interventional Radiology
Department of Diagnostic Pathology	Department of Diagnostic Pathology
Department of Oral and Maxillofacial Surgery	Department of Oral and Maxillofacial Surgery

Clinical Departments
Department of Clinical Pathology

Number of Staff

As of May 1, 2021

Category	Full-time	Part-time	Total
Faculty Member (Faculty of Medicine)	249	0	249
Clinical Lecturer	61	0	61
Clinical Assistant Professor	64	0	64
Researcher	3	2	5
Senior Resident	0	244	244
Junior Resident	0	74	74
Clinical Assistant	0	56	56
Hospital Registered Doctor	0	92	92
Nurse	924	43	967
Midwife	63	3	66
Public Health Nurse	1	0	1
Assistant Nurse	2	44	46
Pharmacist	76	4	80
Radiological Technologist	55	1	56
Laboratory Technician	68	12	80
Clinical Engineer	30	1	31
Physical Therapist	39	1	40
Occupational Therapist	15	1	16
Speech-Language-Hearing Therapist	7	2	9
Dental Technician	1	2	3
Dental Hygienist	2	0	2
Orthoptist	3	3	6
Endoscope Technician	0	0	0
Dietician	20	1	21
Cook	17	0	17
Clinical Psychotherapist	8	0	8
Psychiatric Social Worker	1	0	1
Medical Social Worker	13	0	13
Health Information Manager	9	0	9
Medical Technician	0	0	0
Technical Official	29	24	53
Childcare Worker	3	1	4
Administrative Staff	201	72	273
Total	1,964	683	2,647

*For Assistant Administrative Staffs and Senior Staffs, it is calculated by the figures of an Administrative Staff (part-time).

*For Assistant Technical Staffs and Assistant Skilled Staffs, it is calculated by the figures of a Technical Staff (part-time).

*For Assistant Skilled Staffs and Senior Staffs who belong to the Nursing Department, it is calculated by the figures of an Assistant Nurse (part-time).

*For Assistant Technical Staffs in the Children's Medical Center, it is calculated by the figures of a Nursery Staff.

Chiefs/Directors of Clinical Services and Departments

As of April 1, 2021

Director	Vice President • Executive Director	HARA Akira
Vice Director	Professor	YAMAGATA Kunihiko
Vice Director	Professor	HIRAMATSU Yuji
Vice Director	Professor	NISHIYAMA Hiroyuki
Vice Director	Professor	MAENO Tetsuhiro
Vice Director	Nursing Director	OYAMA Yumiko
Vice Director	Professor	ODA Tatsuya
Vice Director	Director, Department of University Hospital Management	TAKAMIZAWA Akihiko
Advisor to the Director	Professor	OHARA Makoto
Advisor to the Director	Professor	ARAKAWA Yoshihiro
Advisor to the Director	Clinical Professor	FURUTA Junichi
Advisor to the Director	Clinical Professor	HAMANO Jun

Department Chair		
Department of Cardiology	Professor	IEDA Masaki
Department of Cardiovascular Surgery	Professor	HIRAMATSU Yuji
Department of Gastroenterology	Professor	TSUCHIYA Kiichiro
Department of GI&HBP Surgery	Professor	ODA Tatsuya
Department of Pulmonology	Professor	HIZAWA Nobuyuki
Department of Thoracic Surgery	Professor	SATO Yukio
Department of Nephrology	Professor	YAMAGATA Kunihiko
Department of Urology	Professor	NISHIYAMA Hiroyuki
Department of Endocrinology and Metabolism	Professor	SHIMANO Hitoshi
Department of Breast and Endocrine Surgery	Professor	HARA Hisato
Department of Rheumatology	Associate Professor	MATSUMOTO Isao
Department of Hematology	Professor	CHIBA Shigeru
Department of Psychiatry	Professor	ARAI Tetsuaki
Department of Dermatology	Professor	NOMURA Toshifumi
Department of Pediatrics	Professor	TAKADA Hidetoshi
Department of Pediatric Surgery	Professor	MASUMOTO Kouji
Department of Plastic and Reconstructive Surgery	Professor	SEKIDO Mitsuru
Department of Neurology	Clinical Professor	ISHII Kazuhiro
Department of Neurosurgery	Clinical Professor	ISHIKAWA Eiichi
Department of Stroke and Cerebrovascular Diseases	Professor	MATSUMARU Yuji
Department of Orthopaedic Surgery	Professor	YAMAZAKI Masashi
Department of Rehabilitation Medicine	Professor	HADA Yasushi
Department of Ophthalmology	Professor	OSHIKA Tetsuro
Department of Obstetrics and Gynecology	Professor	SATO Toyomi
Department of Otolaryngology	Professor	TABUCHI Keiji
Department of Anesthesiology	Professor	TANAKA Makoto
Department of Oral and Maxillofacial Surgery	Professor	BUKAWA Hiroki
Department of Adolescent, Addiction, Occupational Psychiatry and Dialogical Approach	Professor	MATSUZAKI Ichiyo
Department of Emergency and Critical Care Medicine	Professor	INOUE Yoshiaki
Department of Radiation Oncology	Professor	SAKURAI Hideyuki

Department Chair		
Department of Diagnostic and Interventional Radiology	Professor	NAKAJIMA Takahito
Department of Infectious Diseases	Professor	SUZUKI Hiromichi
Department of General Medicine and Primary Care	Professor	MAENO Tetsuhiro
Department of Diagnostic Pathology	Professor	NOGUUCHI Masayuki
Department of Clinical Pathology	Professor	KAWAKAMI Yasushi
Department of Clinical and Molecular Genetics	Professor	NOGUUCHI Emiko
Department of Sleep Disordered Breathing	Professor	HIZAWA Nobuyuki
Department of Medical Oncology	Professor	SEKINE Ikuo
Department of General Internal Medicine	Assistant Professor	KAWANO Satoru

Clinical Facilities		
Clinical Laboratory Department	Professor	KAWAKAMI Yasushi
Operation Department	Professor	ODA Tatsuya
Radiology Department	Professor	NAKAJIMA Takahito
Department of Transfusion Medicine	Clinical Professor	NISHIKII Hidekazu
Endoscopic Center	Assistant Professor	NARASAKA Toshiaki
Department of Medical Informatics, Strategic Planning and Management	Professor	OHARA Makoto
Department of Pathology	Professor	NOGUUCHI Masayuki
Rehabilitation Department	Professor	HADA Yasushi
Department of Blood Purification	Professor	YAMAGATA Kunihiko
Department of Quality Assurance and Risk Management	Professor	HOMMA Satoshi
Department of ISO & Medical Service Support	Clinical Professor	FURUTA Junichi
Department of Clinical Nutrition	Clinical Professor	SUZUKI Hiroaki
Department of Infection Control	Professor	HITOMI Shigemi
Clinical Psychology Department	Professor	ARAI Tetsuaki
Department of Clinical Genetics	Professor	NOGUUCHI Emiko
Medical Liaison and Patient Support Services Center	Clinical Professor	HAMANO Jun
SPD Center	Professor	KAWAKAMI Yasushi
Center for Maternal, Fetal and Neonatal Health	Professor	TAKADA Hidetoshi
Center for Medical Education and Training	Clinical Professor	SEO Emiko
Center for Palliative and Supportive Care	Professor	SEKINE Ikuo
Tsukuba Human-Tissue Diagnostic Center	Professor	NOGUUCHI Masayuki
Proton Beam Therapy Center	Professor	SAKURAI Hideyuki
Comprehensive Cancer Center	Professor	SEKINE Ikuo
Clinical Engineering Technologist Center	Clinical Professor	YAMAMOTO Sumii
Children's Medical Center	Professor	TAKADA Hidetoshi
Pediatric Critical Care Center	Professor	HIRAMATSU Yuji
Center for Dementia-Related Diseases	Professor	ARAI Tetsuaki
Bed Management Center	Professor	HIRAMATSU Yuji
Tsukuba Human-Tissue Biobank Center	Professor	NISHIYAMA Hiroyuki
International Medical Center	Professor	HIRAMATSU Yuji
Ibaraki Prefectural Center of Disaster Psychiatry	Professor	TACHIKAWA Hirokazu
Tsukuba Prevent Medical Research Center	Clinical Professor	SUZUKI Hideo
Advanced Emergency and Critical Care Center	Professor	INOUE Yoshiaki

Clinical Facilities		
Medical Center for Intractable Diseases	Clinical Professor	YAMAGATA Kunihiro
Tsukuba Sports Medicine & Health Science Center	Professor	YAMAZAKI Masashi
Nutrition Support Center	Professor	MASUMOTO Kouji
Antimicrobial Stewardship Center	Professor	HITOMI Shigemi
Epilepsy Center	Clinical Professor	ISHIKAWA Eiichi
Dental Laboratory	Professor	BUKAWA Hiroki
Ambulatory Treatment Center	Professor	SEKINE Ikuo
Mito Clinical Education and Training Center	Professor	KOBAYASHI Hiroyuki
Ibaraki Clinical Education and Training Center	Professor	SUZUKI Yasuyuki
Hitachinaka Medical Education and Research Center	Vacancy	
Hitachi Medical Education and Research Center	Professor	KOMATSU Yoji
Tsuchiura Clinical Education and Training Center	Professor	FUKUDA Taeko
Tsukuba-City Birth Center	Professor	HAMADA Hiromi
Kamisu Clinical Education and Training Center	Professor	NISHI Isao
Western Ibaraki Prefectural Joint Center for Clinical Education and Training	Professor	YAMAMOTO Masayoshi
Koga-Bando Clinical Education and Training Center	Professor	TAKEDA Taichi
Ibaraki Pediatric Education and Training Station	Professor	HORIGOME Hitoshi
Toride Community Medical Education Station	Professor	YATO Shigeru

Other Facilities		
Radiotherapy Quality Management Office	Professor	SAKAE Takeji
International Strategic Zone Promotion Office	Professor	SAKURAI Hideyuki
Volunteer Office	Nursing Director	OYAMA Yumiko
Comprehensive Disaster and Emergency Management Office	Professor	YAMAGATA Kunihiro
Physician's Affairs Support Office	Professor	HIRAMATSU Yuji
Office for the Promotion of Regenerative Medicine	Professor	KANEKO Shin
Pharmacy Department	Professor	HOMMA Masato
Nursing Department	Director	OYAMA Yumiko
Department of University Hospital Management	Director	TAKAMIZAWA Akihiko
Division of Administrative Affairs	Head	ONUKI Yasushi
Division of Strategic Management	Head	EBITSUBO Masakazu
Division of Accounting	Head	FURUYA Kazuyuki
Division of Hospital Redevelopment Promotion	Head	INOUE Kouichi
Division of Medical Support	Head	SAWABE Yasutoshi
Division of Quality and Safety Management	Head	YAMAGUCHI Takeshi

Research and Education Centers		
Proton Medical Research Center	Professor	SAKAE Takeji
Division of Strategic Research in Advanced Particle Therapy	Professor	SAKURAI Hideyuki
Division of Research and Development of Neutron Capture Therapy	Associate Professor	NAKAI Kei

Institute for Joint Usage and Research		
Tsukuba Clinical Research & Development Organization	Professor	ARAKAWA Yoshihiro

Designated Special Functions of the Hospital

List of facility criteria notification

Facility criteria	Designation dates
Basic medical fees	
Initial dental visit to regional dentistry support hospitals	April 1, 2010
Additional outpatient dental care environment system 2	December 1, 2020
Special dental treatment	April 1, 2010
Standard hospitalization in advanced treatment hospitals	October 1, 2016
Emergency medical management	April 1, 2020
Hyperacute cerebral apoplexy	April 1, 2008
Medical records management system 1	July 1, 2014
Medical clerk auxiliary system 1 (15:1)	July 1, 2019
Acute phase nursing auxiliary system (50:1)	August 1, 2015
Nighttime placement of nursing staff (12:1)	April 1, 2017
Healthcare environment	July 1, 2009
Special addition for healthcare environment for serious patients	July 1, 2007
Sterile preparation and treatment 1	April 1, 2012
Sterile preparation and treatment 2	April 1, 2012
Palliative medicine	April 1, 2008
Management of physical complications in psychiatric departments	April 1, 2008
Psychiatric liaison team	April 1, 2016
Eating disorder hospitalization and treatment management	September 1, 2014
Nutrition support team	December 1, 2018
Medical safety measures 1	April 1, 2008
Infection control measures 1	April 1, 2012
Infection control measures 1 (Regional cooperation for infection control measures described in Note 2)	April 1, 2012
Infection control measures 1 (Support for the proper use of antibacterial medicines described in Note 3)	August 1, 2018
Bedsore patient management	May 1, 2019
High risk pregnancy management	April 1, 2009
High-risk delivery management	April 1, 2009
Breathing care team	May 1, 2011
Generic drug use system 1	December 1, 2018
Inpatient pharmaceutical service 1	June 1, 2012
Inpatient pharmaceutical service 2	April 1, 2016
Data reporting	October 1, 2012
Hospitalization and discharge support adjustments	June 1, 2012
Hospitalization and discharge support adjustments (Hospitalization support adjustment as described in Note 7)	August 1, 2018
Care for high risk patients of delirium	April 1, 2020
Psychiatric disorder treatment management system	November 1, 2016
Psychiatric physician staffing for acute phase treatment	April 1, 2016
Regional healthcare system assurance	April 1, 2020
Intensive care unit management 4	April 1, 2016
Intensive care unit management 4 (Early mobilization and rehabilitation as described in Note 4)	April 1, 2018
High-care unit hospitalization management 1	April 1, 2014
Stroke care unit hospitalization management	October 1, 2018
Neonatal intensive care unit management	October 1, 2014
Neonatal care unit hospitalization medical management	April 1, 2010
Pediatric hospitalization and treatment management 1	June 1, 2017
Short-term stay operation basic fee 1	October 1, 2002
Specially designated medical fees	
Remote monitoring stipulated in Note 5 of cardiac pacemaker guidance management	April 1, 2020
Diabetic complications management	December 1, 2008
Cancer pain palliative guidance management	April 1, 2010
Cancer patient guidance management (i)	April 1, 2010
Cancer patient guidance management (ii)	October 1, 2014
Cancer patient guidance management (iii)	March 1, 2015
Cancer patient guidance management (iv)	April 1, 2020
Outpatient palliative care management	September 1, 2012
Post-transplant patient guidance management (after organ transplantation)	January 1, 2018
Post-transplant patient guidance management (after hematopoietic stem cell implant)	July 1, 2012
Diabetic dialysis prevention guidance management	June 1, 2012
Severe mastitis prevention and care guidance	April 1, 2018
Gynecological specific disease treatment management	April 1, 2020
Renal replacement therapy guidance management	April 1, 2020
In-hospital triage	May 1, 2015
Outpatient radiotherapy	April 1, 2012
Additional consultation support (as described in guidance on balancing medical treatment and work Note 3)	May 1, 2021
Nicotine dependency guidance management	March 1, 2009
Cancer treatment coordination planning	November 1, 2011
Interferon treatment planning for hepatitis	April 1, 2010
Guidance to high-risk nursing mothers 1	April 1, 2018
Guidance to high-risk nursing mothers 2	April 1, 2018
Clinical pharmacy services	April 1, 2010
Examination and image information provision and electronic medical information evaluation	November 1, 2016
Medical Equipment Safety Management 1	April 1, 2008
Medical Equipment Safety Management 2	August 1, 2011

Facility criteria	Designation dates
Medical Equipment Safety Management (Dentistry)	December 1, 2011
General medical management regulated in Note 11 of odontology management and dental treatment management	April 1, 2010
Guidance and management regarding non-pulsatileventricular assist device (at home)	September 1, 2017
Guidance and management regarding tumor treating fields (at home)	April 1, 2018
Guidance and management regarding transanal irrigation (at home)	April 1, 2018
Continuous blood glucose monitor (using a continuous glucose meter that is linked to an intermittent infusion syringe pump) and [Subcutaneous] continuous glucose monitoring	April 1, 2014
Continuous blood glucose monitor (using a continuous glucose meter that is not linked to an intermittent infusion syringe pump)	April 1, 2020
Genetic testing	November 1, 2016
Semmes-Weinstein monofilament test	March 1, 2019
MRD measurements	August 1, 2019
BRCA1/2 gene test	April 1, 2020
Cancer genome profiling test	April 1, 2020
Congenital metabolic disorder test	April 1, 2020
Anti-HLA antibody test (screening and specificity identification)	June 1, 2018
HPV nucleic acid amplification testing (including the simple genotype method)	April 1, 2014
Sample testing management (IV)	December 1, 2012
International standard testing management	December 1, 2018
Genetic counseling	April 1, 2008
Genetic tumor counseling	April 1, 2020
Angioscopy testing by cardiac catheterization tests	April 1, 2008
Fetal echocardiography	April 1, 2010
Walk tests and shuttle walking test	June 1, 2012
Head-up tilt (HUT) test	July 1, 2012
[Subcutaneous] Continuous glucose monitoring	April 1, 2010
Long-term continuous intracranial electroencephalography	May 1, 2008
Long-term electroencephalogram simultaneous recording test examination 1	October 1, 2020
Electroencephalographic examination 1	December 1, 2020
Neurological examination	April 1, 2008
Hearing aid fitting examination	April 1, 2007
Full-field precise ERG	April 1, 2020
Low vision diagnosis	September 1, 2018
Contact lens testing 1	April 1, 2008
Pediatric food allergy challenge testing	April 1, 2006
Oral administration/IV provocation testing	April 1, 2010
CT fluoroscopic-guided bronchoscopy	July 1, 2017
Diagnostic Imaging Management 1	November 1, 2018
Diagnostic Imaging Management 2	April 1, 2008
Diagnostic Imaging Management 3	June 1, 2018
Remote image diagnosis	April 1, 2017
CT/MRI imaging	April 1, 2014
Coronary artery CT scanning	January 1, 2009
Computed tomography-based fractional flow reserve	July 1, 2020
Cardiac MRI scanning	January 1, 2009
Breast MRI scanning	April 1, 2016
MRI scanning of pediatric patient under anesthesia	April 1, 2018
Head MRI scanning	June 1, 2018
Anti-cancer drugs prescription management	April 1, 2010
Outpatient chemotherapy 1	April 1, 2009
Sterilization Treatment for Pharmaceutical Preparations	April 1, 2008
Cardiovascular disease rehabilitation (I)	October 1, 2013
Cerebrovascular disease rehabilitation (I)	April 1, 2008
Musculoskeletal rehabilitation (I)	April 1, 2010
Respiratory rehabilitation (I)	July 1, 2006
Cancer patient rehabilitation	May 1, 2012
Dental intraoral rehabilitation fee 2	June 1, 2014
Psychiatric short care (large scale)	August 1, 2016
Psychiatric day care (large scale)	August 1, 2016
Medical care and protection	April 1, 2004
Local ethanol injection (into the thyroid gland)	April 1, 2010
Local ethanol injection (into the parathyroid gland)	April 1, 2010
Artificial kidney	April 1, 2018
Artificial kidney induction phase 2 and kidney replacement therapy outcome	April 1, 2018
Quality assurance for dialysis fluid and hemodiafiltration	August 1, 2013
Surgical microscope	December 1, 2020
Bipedal Locomotion (with a robot suit)	May 1, 2018
CAD/CAM crown	April 1, 2016
Dental techniques in plate denture repair an relining 1 and 2	April 1, 2010
Sentinel lymph nodes	April 1, 2010
Reconstructive surgery using tissue expander (limited to reconstructive breast surgery only).	July 18, 2013
Surgery for ossification of posterior longitudinal ligament (direct anterior method)	April 1, 2018

Facility criteria	Designation dates
Chemoneucleolysis	April 1, 2020
Total en bloc spondylectomy	January 1, 2018
Photodynamic therapy for malignant brain tumors	April 1, 2017
Cranioplasty (limited to cases involving bone grafting)	April 1, 2008
Brain stimulator implantation (including intracranial electrode implantation) and replacement	March 1, 2008
Spinal cord stimulator implantation and replacement	January 1, 2003
Corneal Transplantation (DSAEK)	April 1, 2020
Glaucoma surgery (implantation of the glaucoma-treating implant (with a plate))	April 1, 2014
Glaucoma surgery (Use of iStent trabecular microbypass in combination with cataract surgery)	April 1, 2018
Retinal reconstruction	April 1, 2014
Artificial middle ear implantation	April 1, 2018
Cochlear implantation, bone-anchored hearing aid implantation and replacement and artificial middle ear materials	May 1, 2007
Endoscopic endonasal sinus Surgery Type V (extended endonasal sinus surgery)	April 1, 2014
Ano-Gnathoplasty (limited to cases involving bone displacement), Lower jawbone Gnathoplasty (limited to cases involving bone displacement)	May 1, 2019
Ano-Gnathoplasty (limited to cases involving bone displacement), Lower jawbone Gnathoplasty (limited to cases involving bone displacement)	April 1, 2014
Endoscopic partial thyroidectomy, adenoma extirpation, endoscopic subtotal thyroidectomy in Graves' Disease patients (both lobes), Endoscopic parathyroid adenoma/hyperplasia operations	April 1, 2016
Endoscopic surgery on malignant thyroid tumors	April 1, 2018
Breast cancer sentinel lymph nodes 1 and sentinel lymph node biopsy (multiple biopsy)	April 1, 2010
Breast cancer sentinel lymph nodes 2 and sentinel lymph node biopsy (single biopsy)	April 1, 2010
Malignant mammary neoplasm operations (nipple-sparing mastectomy (without axillary dissection) and nipple-sparing mastectomy (with axillary dissection))	April 1, 2016
Reconstructive breast surgery using gel filled implant (after mastectomy)	July 18, 2013
Thorascopic extended thymectomy (using endoscopic operation assisting devices)	April 1, 2020
Thorascopic malignant mediastinal tumor surgery (using endoscopic operation assisting devices)	December 1, 2018
Thorascopic benign mediastinal tumor surgery (using endoscopic operation assisting devices)	December 1, 2018
Resection for malignant lung tumors (limited to total removal of parietal and visceral pleura (with diaphragm and pericardial resection))	April 1, 2016
Thorascopic malignant mediastinal tumor surgery (using endoscopic operation assisting devices)	August 1, 2019
Endoscopic suture of esophagus, endoscopic intragastric surgery, duodenal perforation fistula closure, Endoscopic closure of gastrostomy, Endoscopic closure of small intestine stoma, Endoscopic closure of colostomy, Endoscopic closure of nephrostomy or pyelostomy, Endoscopic closure of fistula involving bladder and intestine, Endoscopic closure of vaginointestinal fistula	April 1, 2018
Percutaneous coronary angioplasty (using special catheter)	February 1, 2015
Thorascopic valve reconstruction	April 1, 2018
Thorascopic valve replacement	September 1, 2015
Transcatheter aortic valve replacement	April 1, 2018
Mitra Clip	January 1, 2019
Atherectomy: Left atrial appendage occlusion (transcatheter surgery)	April 1, 2020
Percutaneous transluminal septal myocardial ablation	September 1, 2017
Pacemaker implantation and replacement	April 1, 1998
Pacemaker implantation and replacement (leadless pacemaker)	April 1, 2018
Biventricular pacemaker implantation and replacement (transvenous electrodes)	April 1, 2004
Biventricular pacemaker implantation and replacement (using myocardial electrodes)	April 1, 2020
Cardioverter defibrillator implant (using the transvenous lead or the subcutaneous lead), replacement (others) and transvenous electrode surgery	August 1, 1996
Cardioverter defibrillator implant (using myocardial lead) / replacement (using myocardial lead)	April 1, 2020
Implant or replacement of dual-chamber implantable pacing cardioverter defibrillator (transvenous electrode)	April 1, 2008
Implant or replacement of dual-chamber implantable pacing cardioverter defibrillator (myocardial electrode)	April 1, 2020
Intra-aortic balloon pumping (IABP)	April 1, 1998
Percutaneous cardiopulmonary support (using catheter pump)	April 1, 2018
Ventricular assist device	July 1, 1994
Pediatric ventricular assist device	April 1, 2016
Implantable ventricular assist device (non-pulsatile flow type)	April 1, 2017
Percutaneous transluminal angioplasty	April 1, 2020
Laparoscopic lymphadenectomy	April 1, 2020

Facility criteria	Designation dates
Laparoscopic gastrectomy (using endoscopic operation assisting devices)	April 1, 2020
Laparoscopic partial duodenectomy (and endoscopic procedures)	April 1, 2020
Balloon-occluded retrograde transvenous obliteration	April 1, 2018
Bile duct tumor surgery (limited to hepatectomy with pancreatoduodenectomy)	April 1, 2016
Laparoscopic hepatectomy	October 1, 2016
Living donor liver transplantation	July 1, 1998
Laparoscopic pancreatic tumor resection	April 1, 2018
Laparoscopic pancreatic body and tail tumor surgery	December 1, 2015
Laparoscopic pancreas head tumor surgery	September 1, 2017
Early malignant tumor in large-intestinal submucosal dissection	April 1, 2012
Laparoscopic proctectomy (using endoscopic operation assisting devices)	February 1, 2020
Laparoscopic pyeloplasty (using endoscopic operation assisting devices)	April 1, 2020
Allogeneic cadaver kidney transplantation	April 1, 2008
Living donor kidney transplantation	April 1, 2008
Bladder hydrodistention	July 1, 2019
Laparoscopic bladder malignant tumor surgery (using endoscopic operation assisting devices)	November 1, 2019
Laparoscopic bladder malignant tumor surgery	April 1, 2012
Laparoscopic kidney malignant tumor surgery (using endoscopic operation assisting devices)	July 1, 2017
Laparoscopic prostate malignant tumor surgery (using endoscopic operation assisting devices)	April 1, 2014
Laparoscopic sacral colpopexy	October 1, 2017
Laparoscopically assisted vaginal hysterectomy (using endoscopic operation assisting devices)	April 1, 2018
Laparoscopic uterine cancer surgery (using endoscopic operation assisting devices)	July 1, 2018
Laparoscopic uterine cancer surgery (limited to uterine body cancer)	April 1, 2014
Laparoscopic uterine cancer surgery (limited to cervical cancer)	April 1, 2018
Thoracoamniotic shunting for fetal pleural effusion	April 1, 2014
Fetal transfusion	April 1, 2020
Gastrostomy (including percutaneous endoscopic gastrostomy, laparoscopic gastrostomy) (Surgery listed in General Rules for Surgery 16 of the Medical Fee Points List, Chapter 2, Part 16)	April 1, 2015
Surgery listed in General Rules for Surgery 16 of the Medical Fee Points List, Chapter 2, Part 16 (limited to mastectomy for patients with hereditary breast and ovarian cancer syndrome)	April 1, 2020
Surgery listed in General Rules for Surgery 16 of the Medical Fee Points List, Chapter 2, Part 16 (uterine appendages tumor surgery)	April 1, 2020
Blood Transfusion Management 1	April 1, 2014
Proper use of blood transfusion	August 1, 2015
Coordination system improvement	April 1, 2018
Production of homologous cryoprecipitate technology	August 1, 2020
Pre-operational measures in colostomy and urostomy	June 1, 2012
Swallowing function evaluation during gastrostomy	April 1, 2015
Guided tissue regeneration surgery	November 1, 2016
Wide-area jawbone-anchored device implantation surgery	June 1, 2012
Anesthetic management (I)	April 1, 2010
Anesthetic management (II)	April 1, 2010
Full-time radiotherapy	September 1, 2004
Outpatient radiotherapy	April 1, 2008
Remote radiotherapy planning	April 1, 2018
High energy radiotherapy	April 1, 2002
Outpatient radiotherapy	April 1, 2014
Intensity-modulated radiotherapy (IMRT)	September 1, 2011
Image-guided radiation therapy (IGRT)	April 1, 2010
Respiratory gating measures for extracorporeal radiotherapy	April 1, 2012
Stereotactic radiotherapy	November 1, 2008
Respiratory gating measures for intensity modulated radiotherapy (IMRT)	April 1, 2012
Particle therapy	April 1, 2016
Indication for particle radiation therapy	April 1, 2016
Medical management of particle radiation therapy	April 1, 2016
Image-guided brachytherapy	April 1, 2016
Pathological diagnosis through coordination of insurance-covered medical institutions	August 1, 2012
Rapid preparation of pathologic specimens during surgery using digital pathological images with cooperation among authorized insurance medical Institutions	June 1, 2014
Rapid cytological examination using digital pathological images with cooperation among authorized insurance medical Institutions	June 1, 2014
Pathological diagnosis management 2	October 1, 2014
Pathology specimen of malignant tumor	April 1, 2018
Crown & Bridge maintenance	January 1, 1998
Nutritional care during hospitalization	
Nutritional care during hospitalization (I)	April 1, 2006

Clinical Activities

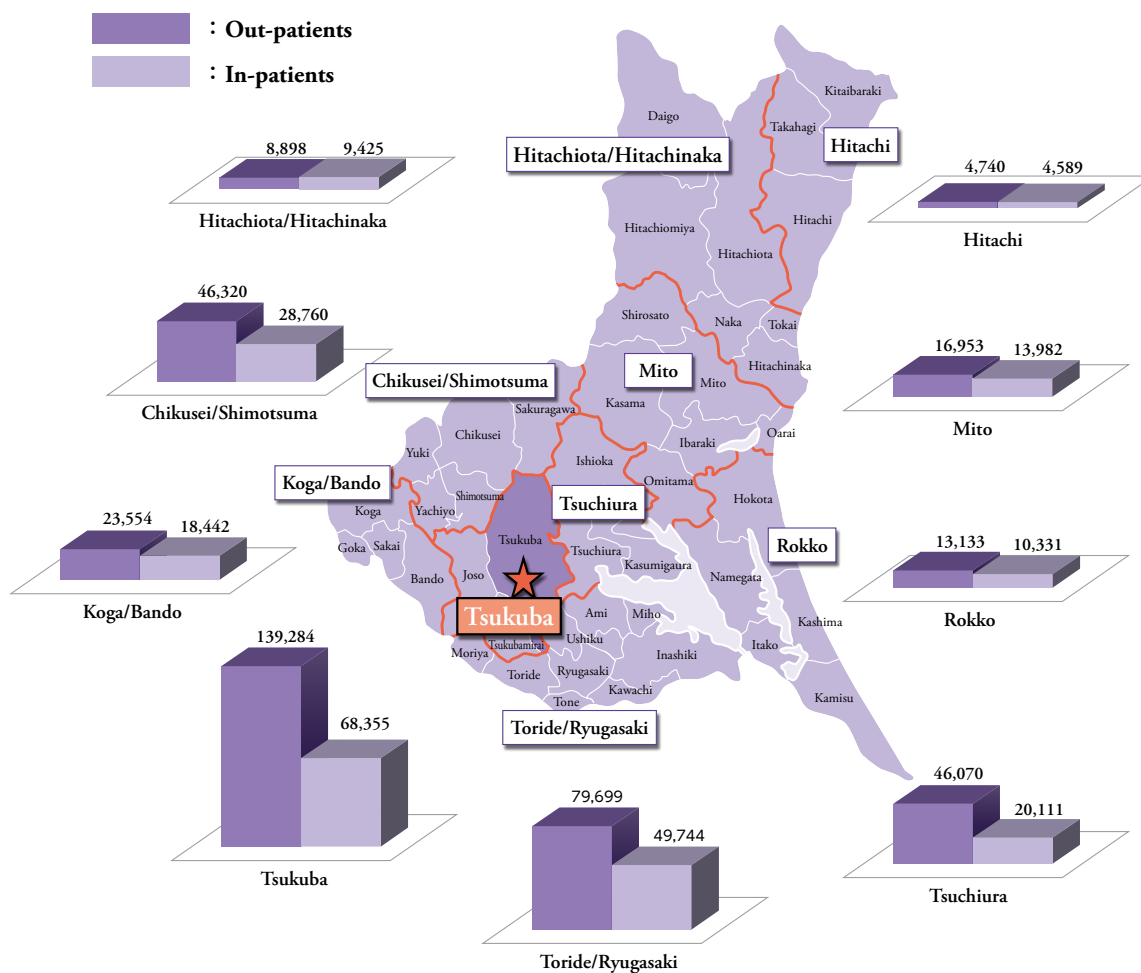
2020

1. Number of Patients

1) By departments

Categories	Out-patients		In-patients	
	Total Number	Average/Day	Total Number	Average/Day
Department of Cardiology	20,535	84.5	14,400	39.5
Department of Cardiovascular Surgery	2,906	12.0	6,171	16.9
Department of Gastroenterology	23,566	97.0	15,099	41.4
Department of GI&HBP Surgery	12,763	52.5	12,026	32.9
Department of Pulmonology	9,974	41.0	9,704	26.6
Department of Thoracic Surgery	2,954	12.2	4,279	11.7
Department of Nephrology	10,192	41.9	5,671	15.5
Department of Urology	15,520	63.9	9,197	25.2
Department of Endocrinology and Metabolism	15,255	62.8	5,215	14.3
Department of Breast and Endocrine Surgery	14,827	61.0	3,834	10.5
Department of Rheumatology	17,395	71.6	6,648	18.2
Department of Hematology	13,157	54.1	14,888	40.8
Department of Psychiatry	17,292	71.2	7,766	21.3
Department of Dermatology	16,609	68.3	4,242	11.6
Department of Pediatrics	16,861	69.4	18,964	52.0
Department of Pediatric Surgery	6,771	27.9	4,877	13.4
Department of Plastic and Reconstructive Surgery	5,906	24.3	3,877	10.6
Department of Neurology	9,488	39.0	8,467	23.2
Department of Neurosurgery	7,163	29.5	9,743	26.7
Department of Stroke and Cerebrovascular Diseases	1,564	6.4	7,592	20.8
Department of Orthopaedic Surgery	26,146	107.6	14,693	40.3
Department of Ophthalmology	29,816	122.7	9,161	25.1
Department of Obstetrics and Gynecology	34,952	143.8	21,524	59.0
Department of Otolaryngology	11,811	48.6	5,562	15.2
Department of Anesthesiology	5,298	21.8	2	0.0
Department of Oral and Maxillofacial Surgery	12,730	52.4	3,246	8.9
Department of Adolescent, Addiction, Occupational Psychiatry and Dialogical Approach	867	3.6	0	0.0
Department of Emergency and Critical Care Medicine	3,331	13.7	9,479	26.0
Department of Radiation Oncology	26,678	109.8	3,681	10.1
Department of Diagnostic and Interventional Radiology	127	0.5	0	0.0
Department of Infectious Diseases	2,117	8.7	462	1.3
Department of General Medicine and Primary Care	3,703	15.2	9	0.0
Department of Diagnostic Pathology	0	0.0	0	0.0
Department of Clinical Pathology	0	0.0	0	0.0
Department of Clinical and Molecular Genetics	183	0.8	0	0.0
Department of Sleep Disordered Breathing	0	0.0	0	0.0
Department of Medical Oncology	1,007	4.1	0	0.0
Department of Rehabilitation Medicine	2,674	11.0	0	0.0
Tsukuba Sports Medicine & Health Science Center	2,910	12.0	0	0.0
Total	405,048	1,666.9	240,479	658.8

2) By medical care zones



2. Number of Beds

As of May 1, 2021

Ward	General Ward				Psychiatric Ward		Total	
	Special Admission		General Units		Psychiatric Ward			
	Unit	Beds	Unit	Beds	Unit	Beds	Unit	Beds
Building B 7F					1	41	1	41
8F			1	37			1	37
10F			2	76			2	76
11F			1	37			1	37
KEYAKI Building 2F	2	48					2	48
5F	3	36	1	26			4	62
6F	1	44	1	30			2	74
7F			2	88			2	88
8F			2	88			2	88
9F			2	88			2	88
10F	1	6	2	80			3	86
11F			2	75			2	75
Total	7	134	16	625	1	41	24	800

General ward: 759 beds Psychiatric ward: 41 beds Total: 800 beds

3. Clinical Examinations

Categories	Number		
	In-patients	Out-patients	Total
Urinalysis	42,680	82,834	125,514
Hematology	235,158	220,148	455,306
Biochemistry	531,708	644,664	1,176,372
Endocrinology	29,774	140,198	169,972
Immunology	138,125	209,465	347,590
Bacteriology	37,068	9,438	46,506
Physiology	113,391	170,195	283,586
Specimen Processing	4,804	98,372	103,176
Pathological Diagnosis	10,136	12,142	22,278
Endoscopy	1,966	9,004	10,970
Total	1,144,810	1,596,460	2,741,270

4. Radiographic Examinations

Categories	Number		
	In-patients	Out-patients	Total
X-ray Radiography	31,004	46,353	77,357
Contrast Radiography	1,844	1,508	3,352
X-ray Examination	23,178	1,757	24,935
X-ray computed tomography	6,692	10,264	16,956
Magnetic Resonance Imaging	3,553	5,347	8,900
Nuclear Medicine	779	1,566	2,345
Radiotherapy	6,523	11,761	18,284
Radiotherapy Planning	445	625	1,070
PET/CT	0	0	0
Total	74,018	79,181	153,199

5. Anesthesia

Categories	Number
General anesthesia	8,725
Local anesthesia	7,081
Total	15,806

6. Operations

Categories	Number
Department of Cardiology	1,951
Department of Cardiovascular Surgery	1,429
Department of Gastroenterology	1,446
Department of GI&HBP Surgery	1,011
Department of Pulmonology	23
Department of Thoracic Surgery	300
Department of Nephrology	102
Department of Urology	1,053
Department of Endocrinology and Metabolism	9
Department of Breast and Endocrine Surgery	643
Department of Rheumatology	25
Department of Hematology	43
Department of Psychiatry	4
Department of Dermatology	492
Department of Pediatrics	311
Department of Pediatric Surgery	516
Department of Plastic and Reconstructive Surgery	680
Department of Neurology	28
Department of Neurosurgery	489
Department of Stroke and Cerebrovascular Diseases	252
Department of Orthopaedic Surgery	1,105
Department of Ophthalmology	2,684
Department of Obstetrics and Gynecology	1,874
Department of Otolaryngology	758
Department of Anesthesiology	2
Department of Oral and Maxillofacial Surgery	1,945
Department of Adolescent, Addiction, Occupational Psychiatry and Dialogical Approach	0
Department of Emergency and Critical Care Medicine	658
Department of Radiation Oncology	203
Department of Diagnostic and Interventional Radiology	1
Department of Infectious Diseases	1
Department of General Medicine and Primary Care	0
Department of Diagnostic Pathology	0
Department of Clinical Pathology	0
Department of Clinical and Molecular Genetics	0
Department of Sleep Disordered Breathing	0
Department of Rehabilitation Medicine	1
Tsukuba Sports Medicine & Health Science Center	6
Total	20,045

7. Deliveries

Categories	Number		
	Mature Infants	Premature Infants	Total
Normal Deliveries	555	119	674
Abnormal Deliveries	258	135	393
Total	813	254	1,067

8. Prescriptions and medicines

Categories	Total	
Number of prescriptions for hospitalized patients	176,024	
Number of prescriptions for outpatients	In the hospital	18,791
	Outside of the hospital	173,595
Rate of prescriptions issued outside of the hospital (%)	90.2	
Number of injection prescriptions for hospitalized patients	111,972	
Number of drug control guidance fees (calculated number of cases)	24,460	
Number of sterile preparations processed (calculated number of cases)	19,011	
Number of injection admixtures	Antineoplastic drugs	17,413
	Total parenteral nutrition	5,629
	Others	13,542
Inpatient pharmaceutical services (calculated number of cases)	48,532	
Treatment administration charges for specified drugs (calculated number of cases)	6,043	

11. Campus · Buildings

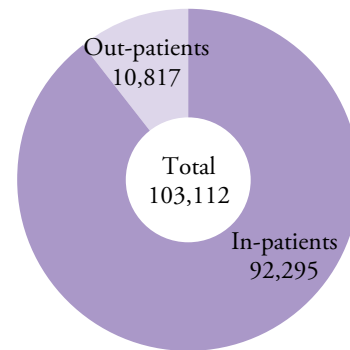
As of April 1, 2021

Total site area= 101,584m ² (incl. leased area of 5,900m ²)				
Buildings (steel-reinforced concrete structure)				
Building name	Size	Building floor space	Total ward floor space	Remarks
Building A (Outpatient clinic)	Four floors and one basement	2,314.00 m ²	10,743.00 m ²	
Building A (New outpatient clinic)	Four floors	995.00 m ²	3,233.00 m ²	
Building B (Ward)	Twelve floor and one basement	2,626.00 m ²	29,977.00 m ²	
Building C (Diagnostic and treatment facilities)	Five floors and one basement	2,508.00 m ²	13,763.00 m ²	
Building D (Radiation oncology)	Two floors	1,031.00 m ²	1,489.00 m ²	
Building F (Tsukuba Prevent Medical Research Center)	One floor	809.00 m ²	809.00 m ²	
Proton Medical Research Center	Four floors	2,142.00 m ²	5,297.00 m ²	
Regional Medical Network System Research Center	Two floors	450.00 m ²	825.00 m ²	
KEYAKI Building	Twelve floors and one basement	7,122.00 m ²	45,746.00 m ²	
KEYAKI Annex Building	Three floors	1,872.00 m ²	5,355.00 m ²	
KASUGA Plaza	Four floors	1,332.00 m ²	4,252.00 m ²	Leased
Total		23,201.00 m ²	121,489.00 m ²	
Nurses' residence No. 1	Five floors	553.00 m ²	2,160.00 m ²	50 rooms
No.2	Eight floors	258.00 m ²	1,705.00 m ²	39 rooms
No.3	Five floors	319.00 m ²	1,520.00 m ²	38 rooms
No.5	Five floors	285.00 m ²	1,134.00 m ²	25 rooms
No.6	Five floors	174.00 m ²	796.00 m ²	22 rooms
No.7	Five floors	734.00 m ²	3,192.00 m ²	100 rooms
Hospital accommodation	Eight floors	252.00 m ²	1,700.00 m ²	39 rooms
Residents and fellows accommodation facility 1	Six floors	271.00 m ²	1,293.00 m ²	46 rooms
Residents and fellows accommodations facility 2	Four floors	666.00 m ²	2,026.00 m ²	64 rooms
Total		3,512.00 m ²	15,526.00 m ²	423 rooms*
Grand total		26,713.00 m ²	137,015.00 m ²	

* = Of which 313 rooms are nurses' residences

9. Rehabilitation Service

(Number)

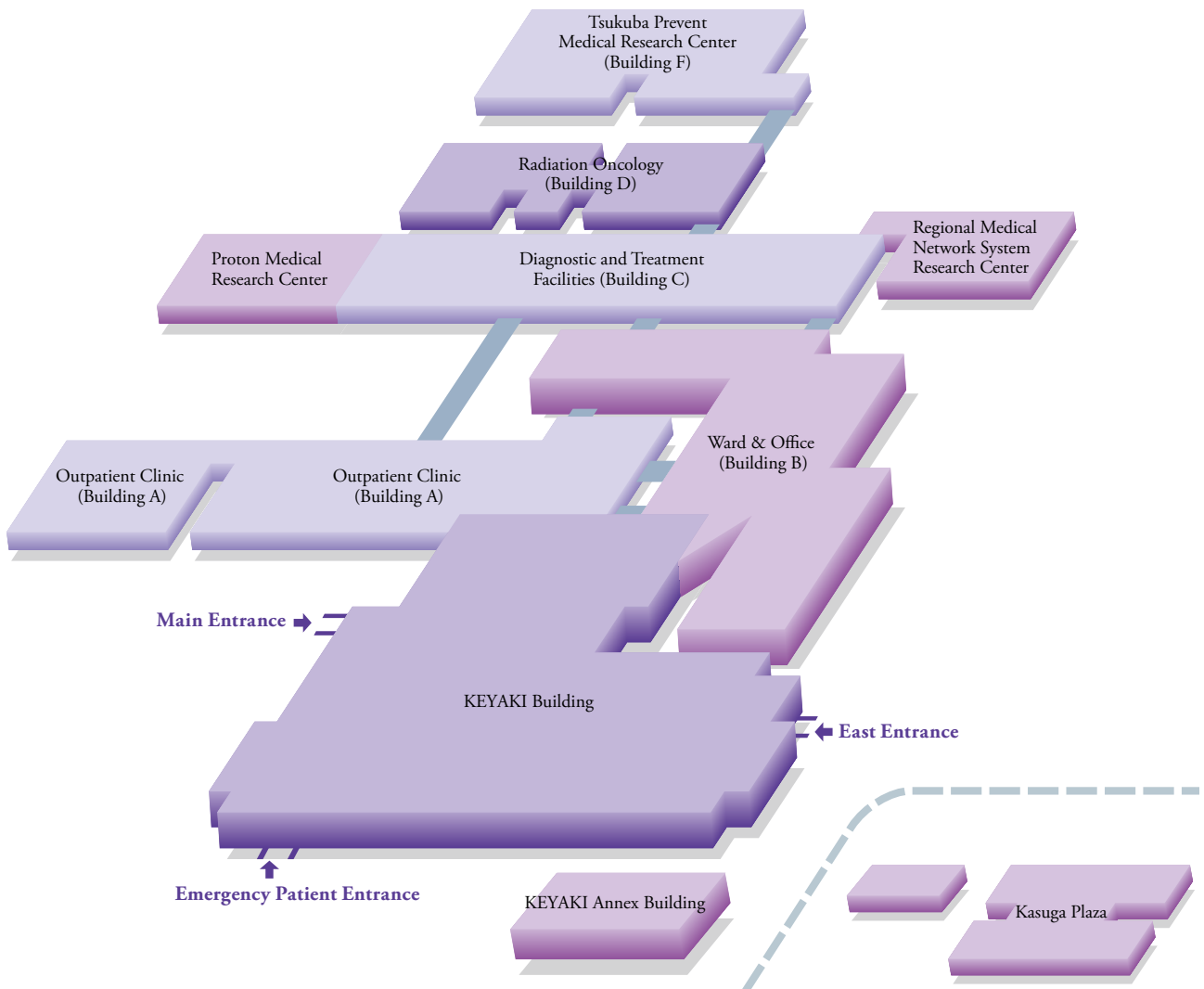


10. Pathologic autopsies

Categories	Total
Number of dead patients	376
Number of pathologic autopsies	15
Autopsy rate	4.0(%)
Number of commissioned autopsies	2

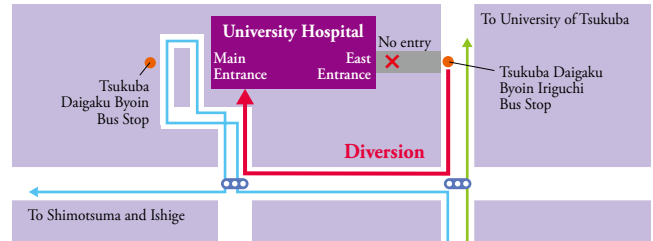
Building Layout

As of April 1, 2021



Access Map

* Members of the public cannot currently use the East Entrance of Building B due to the improvement works being carried out in order to enhance the hospital's functions and patient amenities. We apologize for the inconvenience and request your kind cooperation in using the Main Entrance.



Tsukuba Center Bus Stop
 ⑥ To University of Tsukuba (Clockwise University of Tsukuba route to University of Tsukuba Chuo)
 ⑤ To Tsuchiura Station and Techno Park (Bound for Shimotsuma Station, Ishige Station, and University of Tsukuba Hospital)

① From Tsukuba Express (TX)

- From Akihabara Station to Tsukuba Station takes 45 minutes by rapid train.
- From Tsukuba Center (next to Tsukuba Station A3 Exit) it takes about 5-10 minutes by bus.
 - [Tsukuba Center Bus Terminal #6 Bus Stop]** (Kanto Tetsudo)
 - ▶ Take either a Tsukuba Daigaku Junkan bus (Migi mawari) or a bus bound for Tsukuba Daigaku Chuo, and get off at Tsukuba Daigaku Byoin Iriguchi.
 - ▶ Take a bus bound for Tsukuba Daigaku Byoin, and get off at the last stop.

② From JR Joban Line

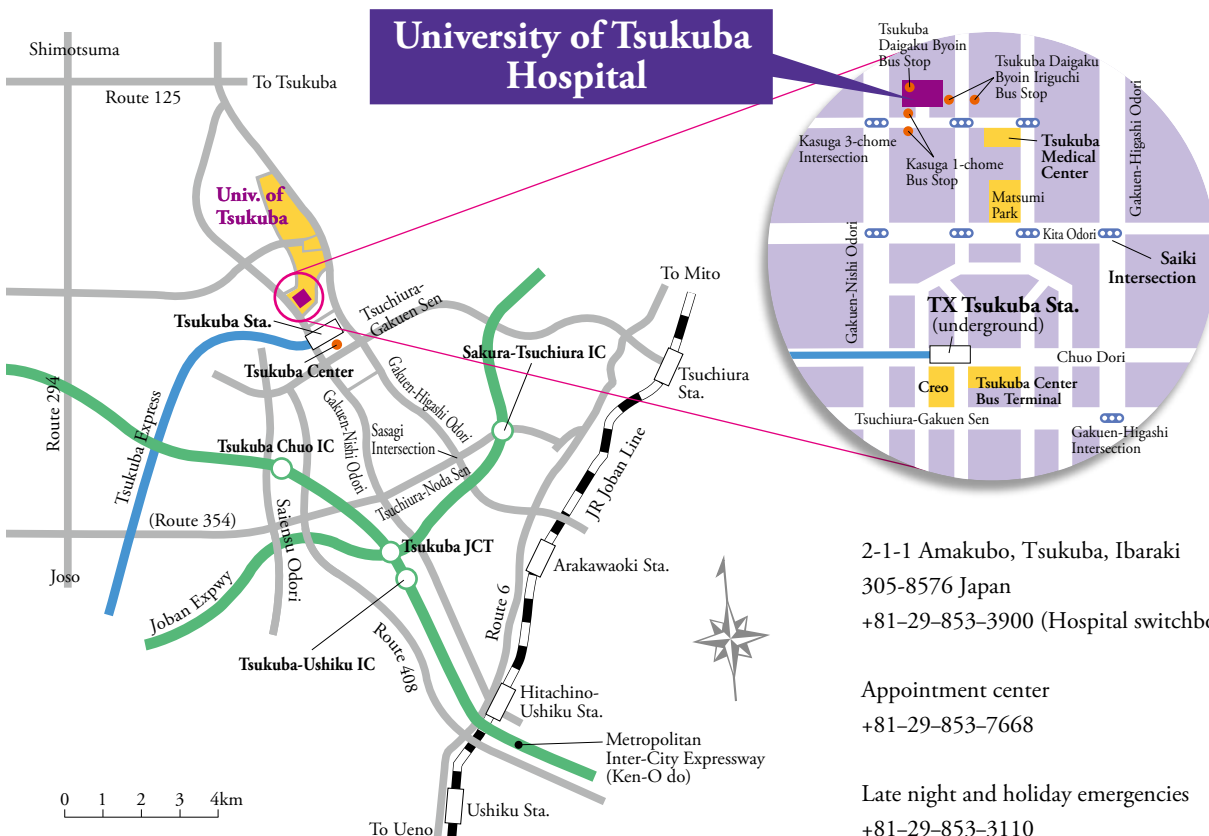
- From Tsuchiura Station it takes about 30 minutes by bus.
 - [#3 Bus Stop at West Exit]**
 - ▶ Take a bus bound for Tsukuba Daigaku Chuo, and get off at Tsukuba Daigaku Byoin Iriguchi. Alternatively, take a bus bound for Tsukuba Center, change buses at Tsukuba Center for the hospital (see ① above for details of which buses to take at Tsukuba Center).
- From Arakawaoki Station it takes about 35 minutes by bus.
 - [#4 Bus Stop at West Exit]**
 - ▶ The bus destinations are the same as for Tsuchiura Station, detailed above.
- From Hitachino-Ushiku Station it takes about 35-45 minutes by bus.
 - [#1 Bus Stop at East Exit]**
 - ▶ The bus destinations are the same as for Tsuchiura Station, detailed above.

③ Highway Bus

- From Tokyo Station it takes about 70 minutes.
 - [Tokyo Station, Yaesu South Exit #2 Bus Stop]**
 - ▶ Take a highway bus bound for Tsukuba University (Chuo), and get off at Tsukuba Daigaku Byoin Iriguchi. Or take a highway bus bound for Tsukuba Center, change buses at Tsukuba Center for the hospital (see ① above for details of which buses to take at Tsukuba Center).

④ Driving directions

- From Joban Expressway (Sakura-Tsuchiura IC)
 - ▶ Take exit for Tsukuba. Turn right at Sasagi Intersection onto Higashi Odori, go down until Saiki Intersection. Turn left onto Kita Odori. Go down Kita Odori, turn right at the second intersection, and then turn left at the first intersection.
- From Metropolitan Inter-City Expressway (Ken-O do) (Tsukuba-Ushiku IC)
 - ▶ Take exit for Tsukuba. Turn left at Inaoka Intersection onto Nishi Odori. Go down Nishi Odori until Kasuga 3-chome Intersection, and turn left.
- From Nishi Odori Iriguchi Intersection on Route 6 near Hitachino-Ushiku Station
 - ▶ Go down Nishi Odori until Kasuga 3-chome Intersection, and turn right.



2-1-1 Amakubo, Tsukuba, Ibaraki
 305-8576 Japan
 +81-29-853-3900 (Hospital switchboard)

Appointment center
 +81-29-853-7668

Late night and holiday emergencies
 +81-29-853-3110

Edited & Published by:
**Division of Administrative Affairs,
Department of University Hospital Management
University of Tsukuba**

Address: 2-1-1 Amakubo, Tsukuba, Ibaraki 305-8576, Japan

TEL: +81-29-853-3900

URL: <http://www.hosp.tsukuba.ac.jp>



FS 80637 / ISO9001