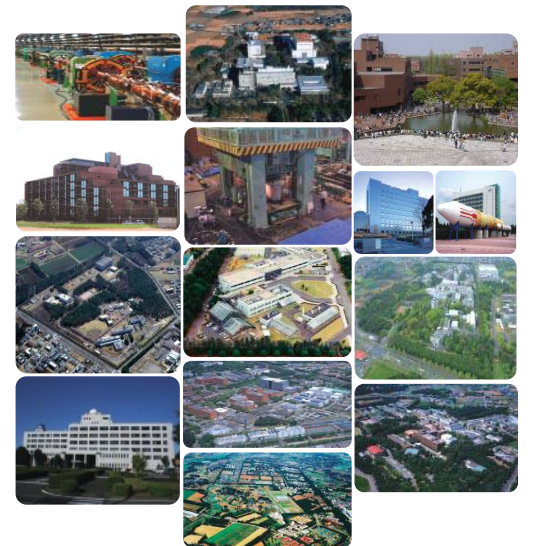
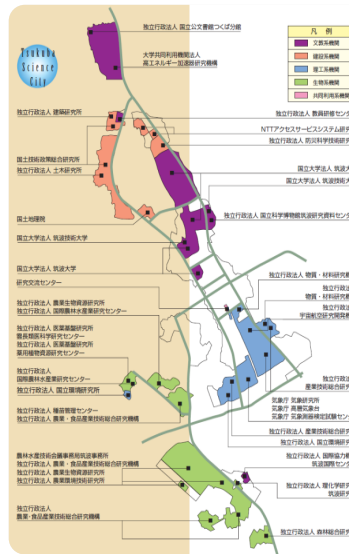
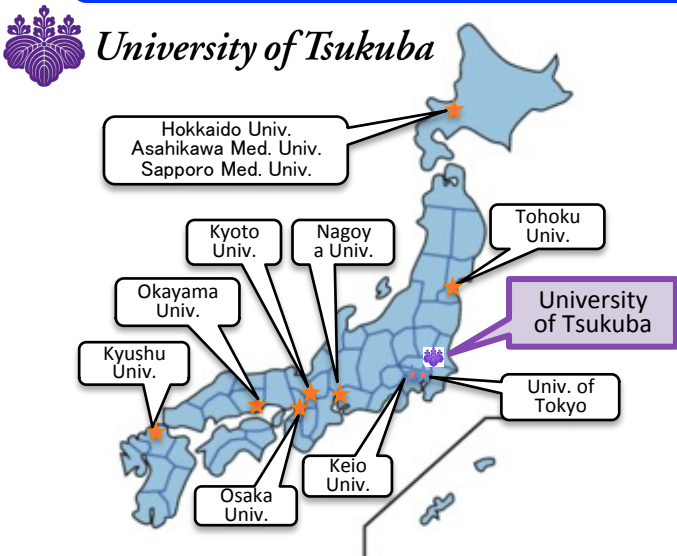


# Tsukuba Clinical Research & Development Organization (T-CReDO)

T-CReDO is responsible to develop the medical seeds born in Tsukuba Science City.

University of Tsukuba is one of ten Clinical and Translational Research Core Centers.

There are ca. 300 research institutes including 29 National Research Institutes and ca. 20,000 researchers are working in Tsukuba.

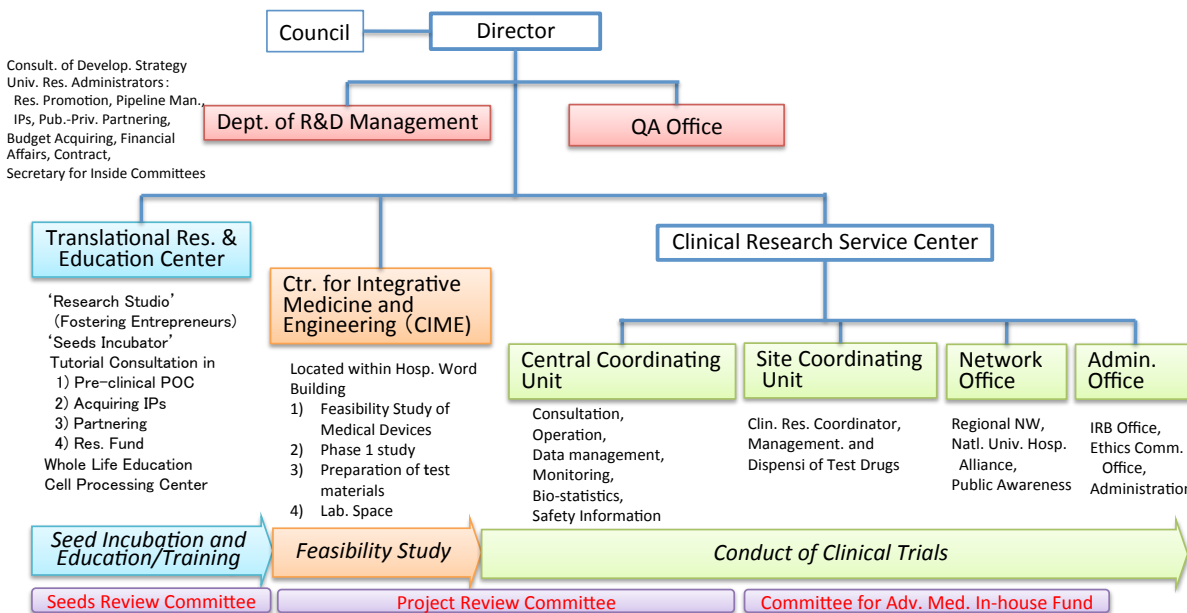


T-CReDO provides one-stop service to researchers and facilitates practical application.



Hands-on support for from the IP and research strategies to clinical development and exit strategy

Established in June, 2015



Staff

As of June 1, 2019

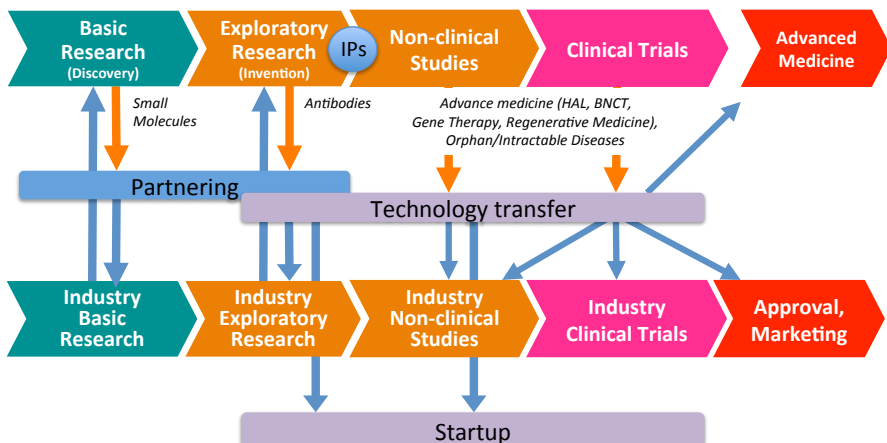
- Total No. of full time staff: **71**
  - No. of Faculties: **17**
  - No. of staff who has the experience in Pharmaceutical Co. R&D: **14**
  - in Medical Device Co. R&D: **1**
  - in MHLW and PMDA: **5**

Pipeline

- Pipeline (as of February, 2019)
  - Pharmaceuticals • Med. Devices • Regen. Med.
  - Total No. of seeds: **148**
    - in A (Exploratory) : **90**
    - in B (Non-Clinical) : **36**
    - in C (Clinical POC) : **22**

## Strategy for Technology Transfer

The principle is to identify the **Clinical Needs**, to make **Target Product Profile (TPP)** and the **Technology Transfer as early as possible** by promoting **Open Innovation**.



## Seeds Registration and Consultation Flow

